



SPECS

- Specs
- CADRE2021 Meta TR 29, 140 mm travel
- 29", Alloy 6066, triple butted tubes, T4, T6, Enduro bearings
- AMORTISSEURROCKSHOX SuperDeluxe Coil Ultimate
- 210 x 55 mm, LSC, rebound, 2-position adjustment, Spring rates: 350 lbs on S and M, 400 lbs on L, 450 lbs on XL
- FOURCHEROCKSHOX Lyrik Ultimate, 160 mm travel
- 29", Charger 2.1 damper, Debonair, LSC, HSC, rebound, Boost (15 x 110 mm), 42 mm offset
- JEU DE DIRECTIONACROG Z544 / Z556
- Alloy cups, sealed bearings
- POTENCERIDE ALPHA Freeride 50
- 50 mm extension, 31.8 mm
- CINTREIDE ALPHA R27
- 31.8 mm, 780 mm width, 27 mm rise, Alloy 7050
- GRIPSRIDE ALPHA DH
- Ultra-soft compound, single clamp, black
- FREINSSRAM G2 RS, 4 pistons, MatchMaker compatible, Bleeding Edge technology, organic pads
- Rotors: SRAM Centerline 200 mm, 6-bolt
- SHIFTERSRAM GX Eagle
- 12s
- GUIDE CHAINE-
- DERAILLEURSRAM GX Eagle
- 12s
- BOITIER DE PEDALERSRAM DUB
- PressFit
- PEDALERSRAM GX Eagle, 170 mm crank arms, DUB, Boost
- Chaining: SRAM GX Eagle, 32t, Narrow-Wide
- CHAINESRAM GX Eagle
- 12s
- CASSETTESRAM GX Eagle
- 12s, 10-52t
- JANTESDT SWISS M1900 Spline
- 29", 28h, 30 mm inner width
- MOYEURRear: DT SWISS 370 - Front: DT SWISS 370
- Rear: 28h, sealed bearings - Front: 28h, sealed bearings
- RAYONSDT SWISS Champion
- Sraignapuffi, 2.0 mm, stainless, with Nylok, black
- PNEUSRear: SCHWALBE Nobby Nic - Front: SCHWALBE Magic Mary
- Rear: 29 x 2.35, Super Trail, Addix Soft, Tubeless Ready - Front: 29 x 2.40, Super Trail, Addix Soft, Tubeless Ready
- TIGE DE SELLEKS Lev Integra
- 34.9 mm, travel: 125 mm on S, 150 mm on M, 175 mm on L, 200 mm on XL, SouthPaw alloy remote
- SELLEFABRIC Scoop Flat Elite
- Cr-Mo rails
- POIDS15.9 kg
- Average weight for S size, without pedals. Weight may differ slightly due to manufacturing tolerances.
- PEDALESNo
- COULEURMatte Graphite
- Matte finish
- ACCESSOIRESDown tube protector, chainstay protector, seatstay protector
- 
- Vidéos

TECH

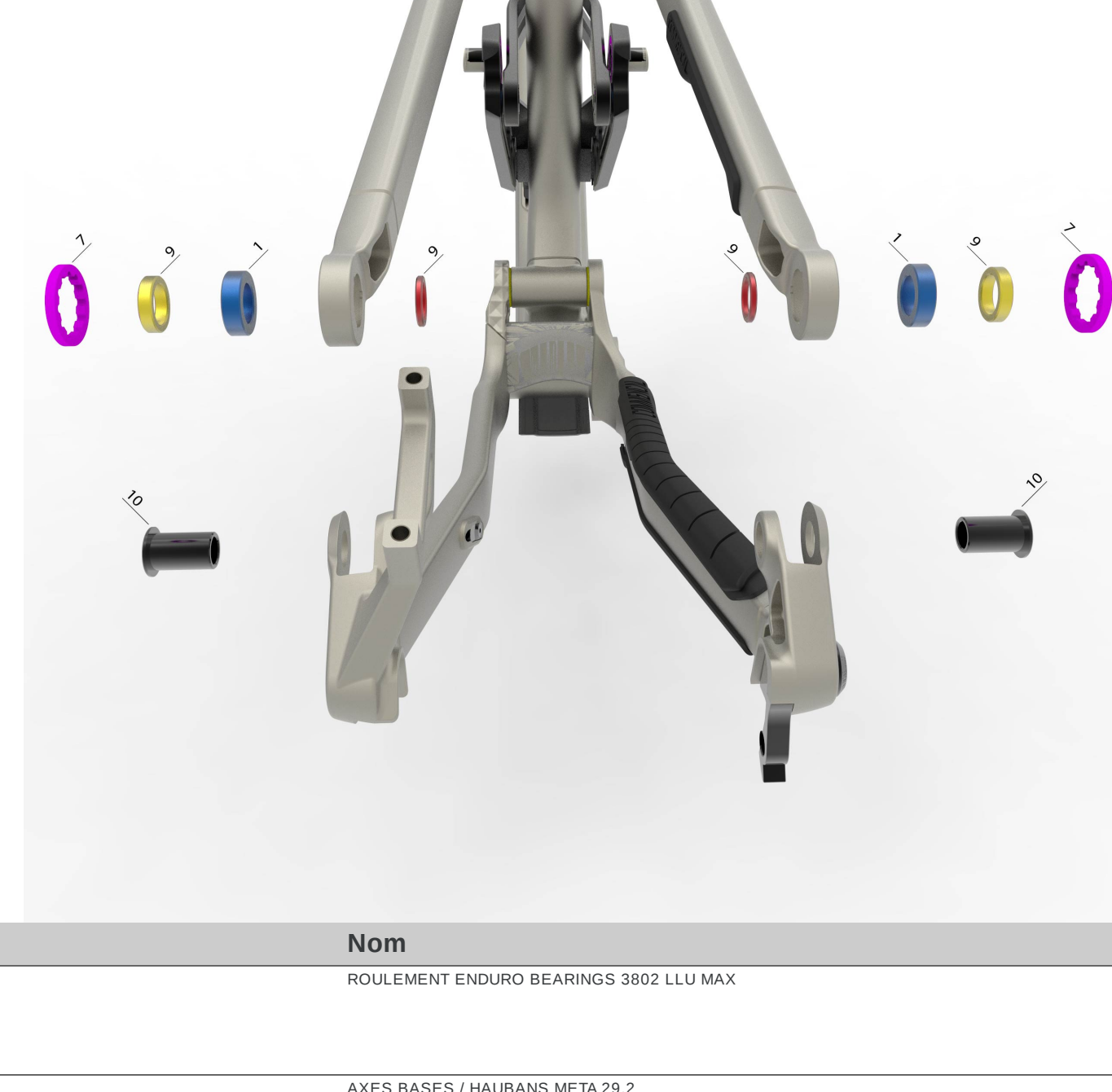
- Tech
- TYPE DE VELOTrail 29"
- CADREAL-6066
- POIDS DU CADRE3.7 kg
- DEBATTEMENT ARRIERE140 mm
- ENTRE-AXE / COURSE210 x 95 mm
- COMPATIBLE PIGGY BACKYes
- BUSELURES AMORTISSEUR20 x 10 mm
- HAUTEUR DE FOURCHE RECOMMANDEE / MAX551 mm / 571 mm
- DOUILLE DE DIRECTIONAPERED
- JEU DE DIRECTIONZ544 / Z556
- LARGEUR MAXIMALE PNEUS (ETRT)Ø65 mm
- STANDARD FREIN A DISQUEPOSTMOUNT 200 mm
- DIAMETRE MAX DISQUE DE FREIN AR220 mm
- DIAMETRE TIGE DE SELLE / COLLIER DE SELLE34,9 mm / 38,5 mm
- BOITIER DE PEDALIERBB92
- ISCGISCG 05
- DERAILLEUR AVANTNo
- AXE DE ROUE ARRIERE12 x 148 mm
- 
- Géométrie
- 
- Tailles
- 
- News

Contact System



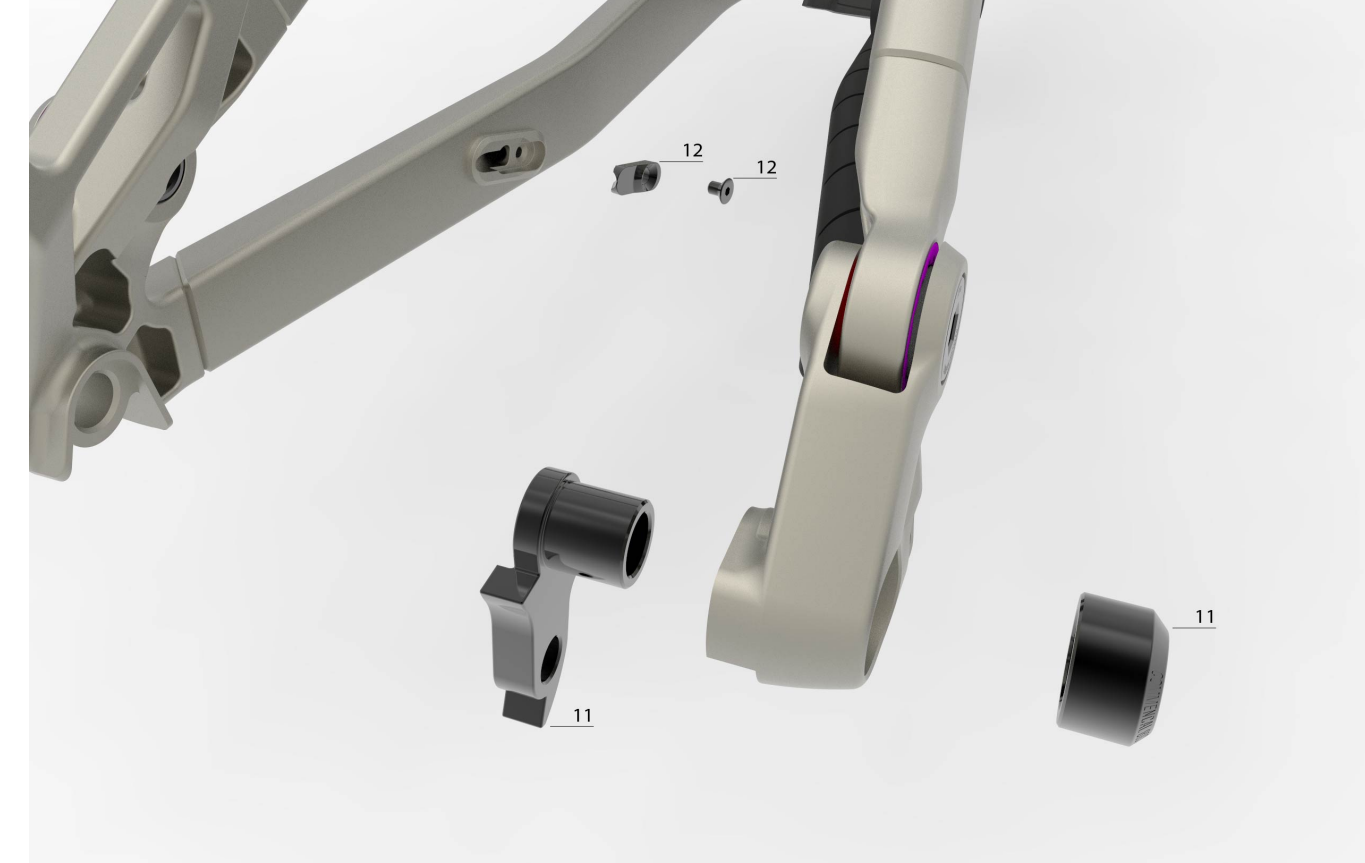
Index	Ref	Nom	Photo
1	W21EB3R02	ROULEMENT ENDOUR BEARINGS 3002 LLU MAX	15 x 24 x 7
2	W21METACLAVIS	CLEVIS META 29.2	
3	W21METAAXLERKCL	AXES BASCULEUR / CLEVIS META 29.2	12 N°/H
4	W19M29AXLESCHCL	AXE AMORTISSEUR / CLEVIS META 29	9 N°/H
5	W21METAAXLERKFT	AXES BASCULEUR / TRIANGLE AVANT META 2021-2023	12 N°/H
6	W21METAROCKER	BASCULEUR META 29.2 / TR 29.2	
7	W21METALOCKRING	ECROU BLOQUE ROULEMENT META 2021-2022	9 N°/H
8	W21METAAXLERKSS	AXES BASCULEUR / HAUBANS META 2021-2023	12 N°/H
BEARING KIT	W21CBMETA	ROULEMENTS ENDOUR BEARINGS META	2 x 6804 / 8 x 3802

Chainstays / Seatstays



Index	Ref	Nom	Photo
1	W21EB3R02	ROULEMENT ENDOUR BEARINGS 3002 LLU MAX	15 x 24 x 7
10	W21METAAXLERKSSS	AXES BASES / HAUBANS META 29.2	12 N°/H
7	W21METALOCKRING	ECROU BLOQUE ROULEMENT META 2021-2022	9 N°/H
3	W21METAWASHERCROSS	RONDELLES BASES / HAUBANS META 2021-2023	
BEARING KIT	W21CBMETA	ROULEMENTS ENDOUR BEARINGS META	2 x 6804 / 8 x 3802

Dropouts



Index	Ref	Nom	Photo
1	W19AXLEWHEELBOOST	AXE DE ROUE ARRIERE - STANDARD MAXLE BOOST	12 N°/H
11	W21METARHR	PATTE DE DERAILLEUR METAKM, TR & SX 2021-2022	10 N°/H
12	W19CLHCABLEGUIDER	GUIDE CABLE INFERIEUR CLASSI META, METAPOWER, FIS, T.E.M.F.D, DW95	3 N°/H

Downtube



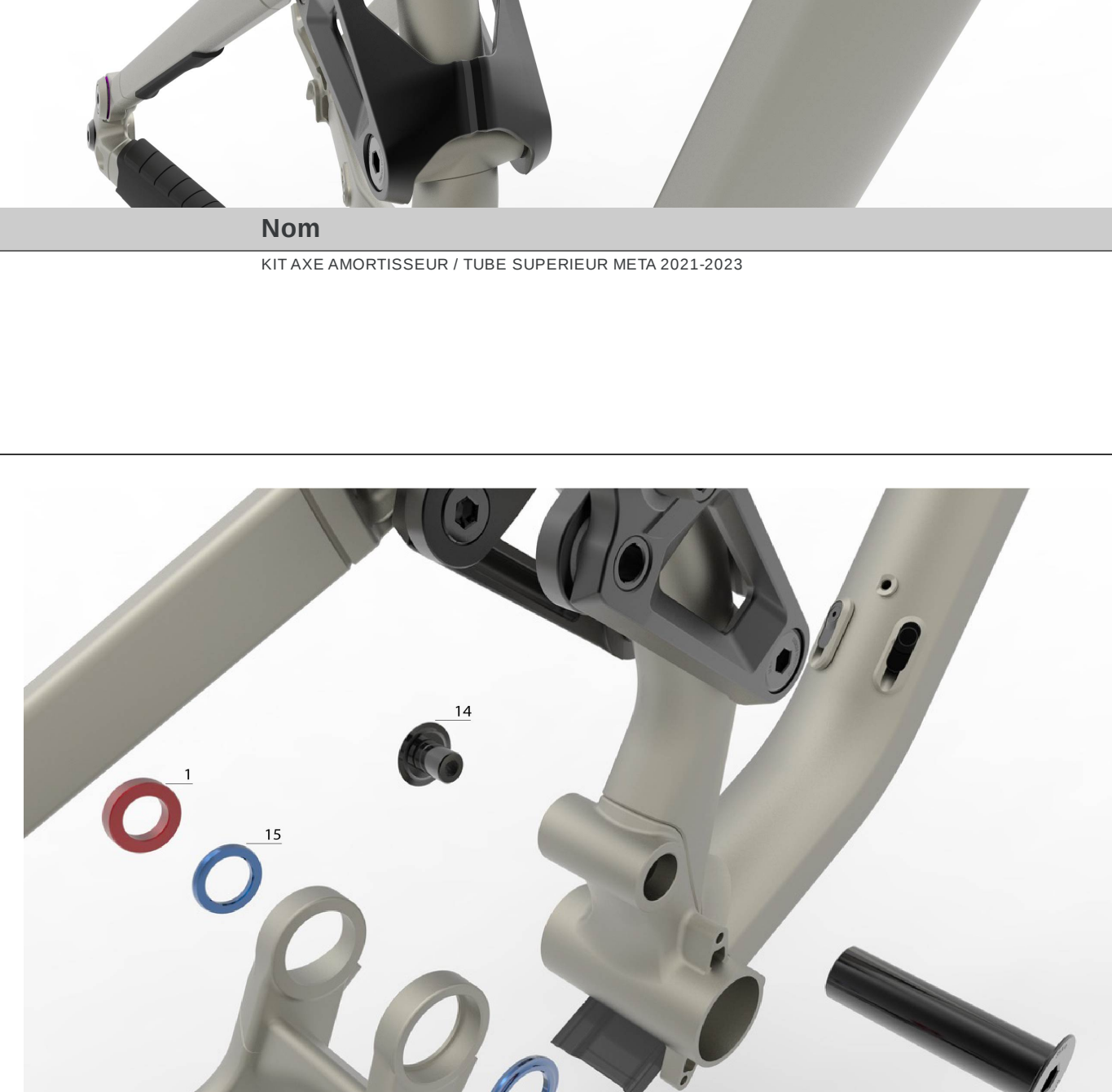
Index	Ref	Nom	Photo
12	W19CLHCABLEGUIDER	GUIDE CABLE INFERIEUR CLASSI META, METAPOWER, FIS, T.E.M.F.D, DW95	3 N°/H
19	W21METAPROTECDT	PROTECTION DE DOWN TUBE META 2021-2023	3 N°/H

TopTube



Index	Ref	Nom	Photo
13	W21METAAXLESHTT	Ø10 AXE AMORTISSEUR / TUBE SUPERIOR META 2021-2023	9 N°/H

Main Pivot



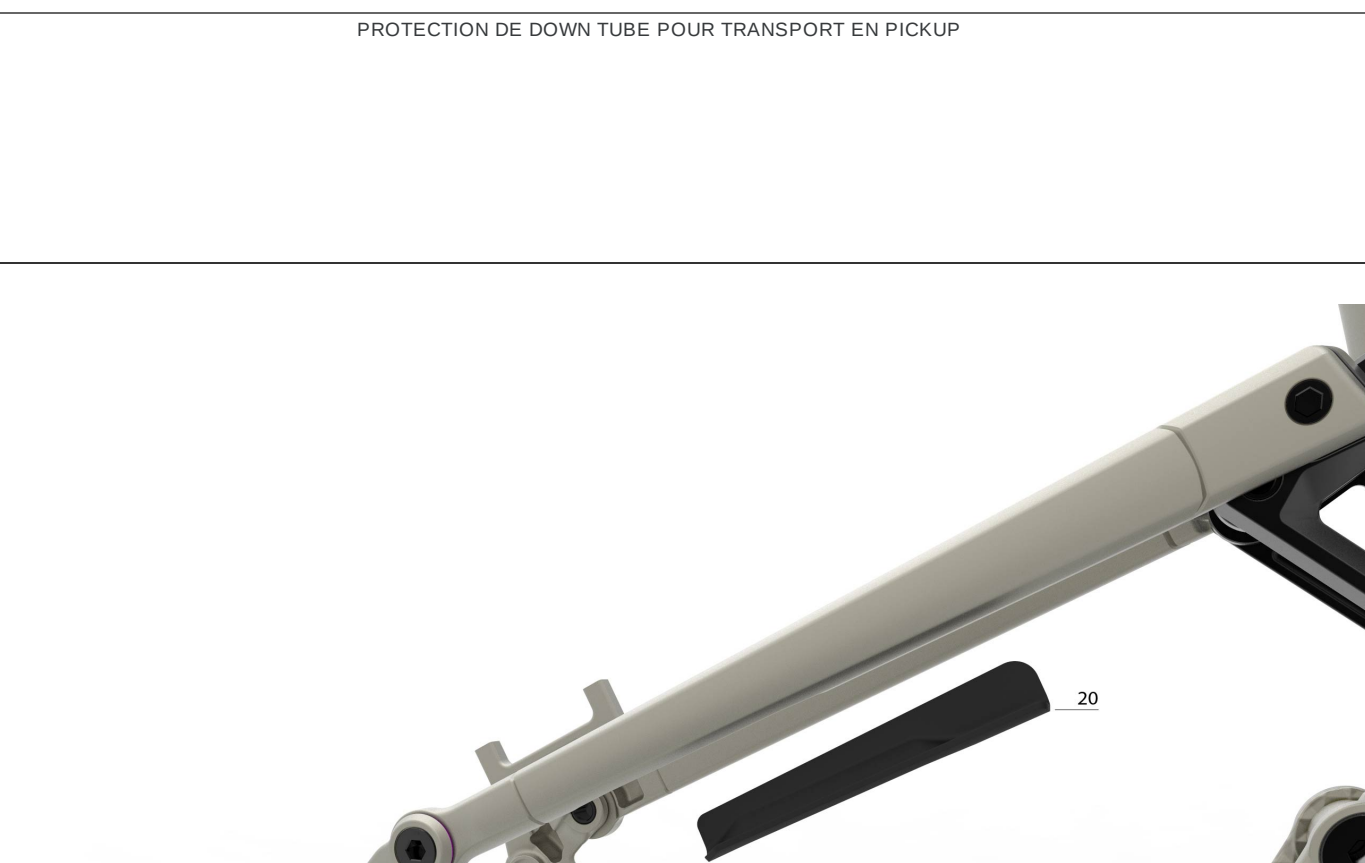
Index	Ref	Nom	Photo
1	W19EB6804	ROULEMENT ENDOUR BEARINGS 6804 LLU MAX	28 x 32 x 7
14	W21METAAXLEMP	KIT AXE PIVOT PRINCIPAL META 2021-2023	35 N°/H / 60H - W21METABOITMP
15	W21METAWASHERMP	RONDELLES PIVOT PRINCIPAL META 2021-2023	
BEARING KIT	W21EBMETA	ROULEMENTS ENDOUR BEARINGS META	2 x 6804 / 8 x 3802

Seals



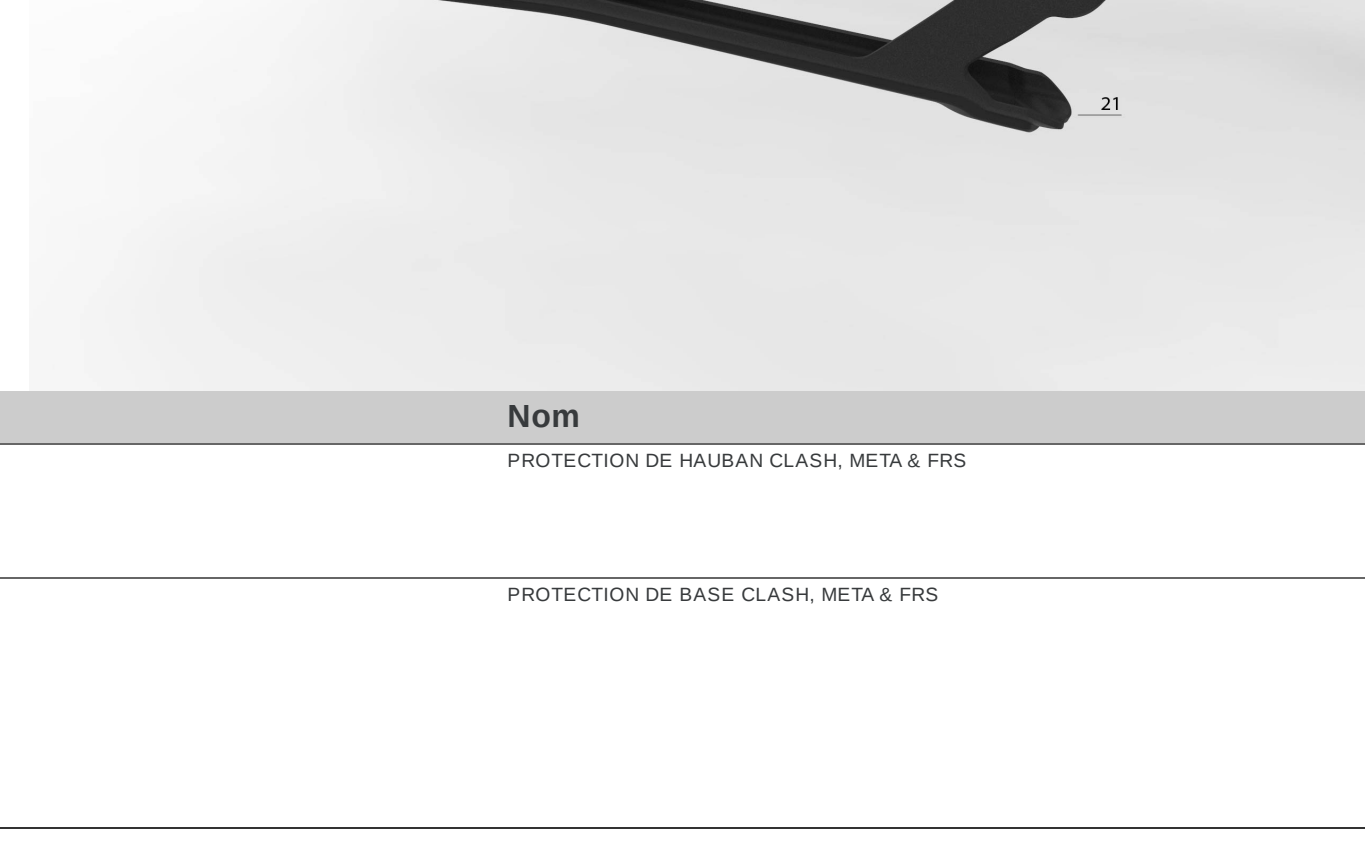
Index	Ref	Nom	Photo
16	W19SEAL1H	PROTECTION DE PASSAGE INTERNE CABLERIE - 1 TROU	
16	W19SEAL2H	PROTECTION DE PASSAGE INTERNE CABLERIE - 2 TROUS	
16	W19SEALNOH	PROTECTION DE PASSAGE INTERNE CABLERIE - 0 TROU	
17	W12HOSESEAL	JOINT DE PASSAGE DURITE INTERNE	
18	W19PROTECPICKUP	PROTECTION DE DOWN TUBE POUR TRANSPORT EN PICKUP	

Protectors



Index	Ref	Nom	Photo
20	W19CLHPROTECSS	PROTECTION DE HAUBAN CLASSI META & FIS	
21	W19CLHPROTECSS	PROTECTION DE BASE CLASSI META & FIS	

Dropper Post Routing



Index	Ref	Nom	Photo
22	W19CLHPROTECSS	PROTECTION DE BASE CLASSI META & FIS	